



STANDARD
KNITTING
MILL

A WRS INC. REDEVELOPMENT
PLANNING IN PROGRESS

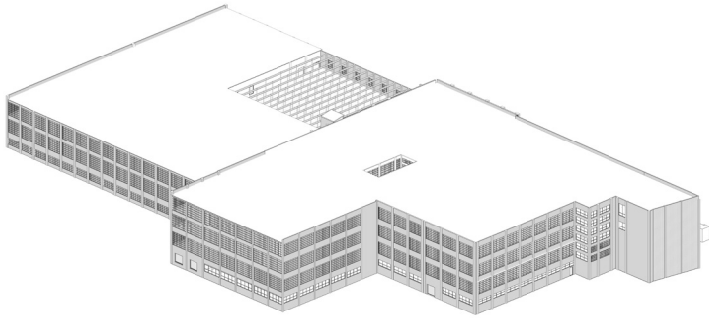


FUTURE

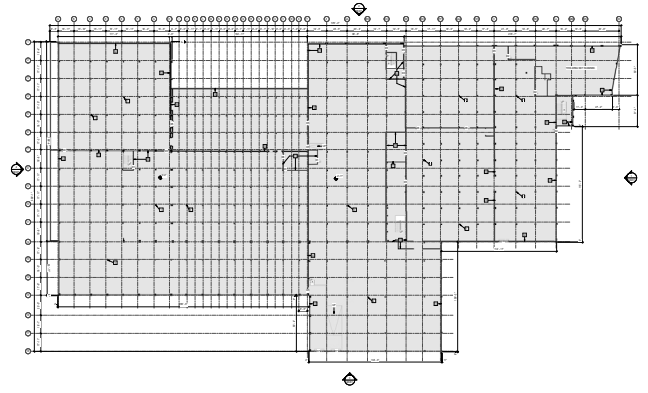
Our goal is to convert the Standard Knitting Mill (SKM) into a dynamic, mixed-use development. We will leverage the history of the SKM while injecting new life through design, architecture and site planning. Our initial concept includes loft-style apartments, specialty retail/market/restaurant space and creative office space. The SKM will offer a unique living experience for its residents and a creative destination for the citizens of Knoxville.

THE BUILDING

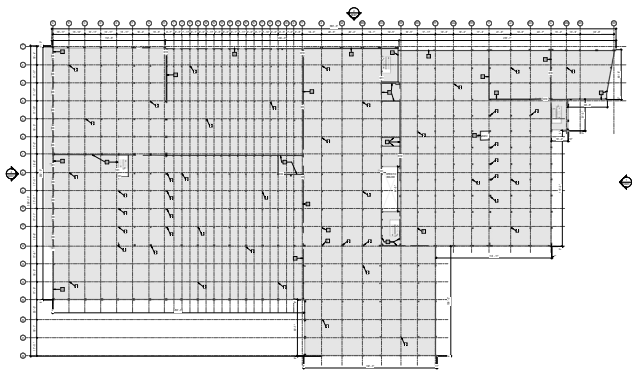
STANDARD KNITTING MILL AS-BUILTS



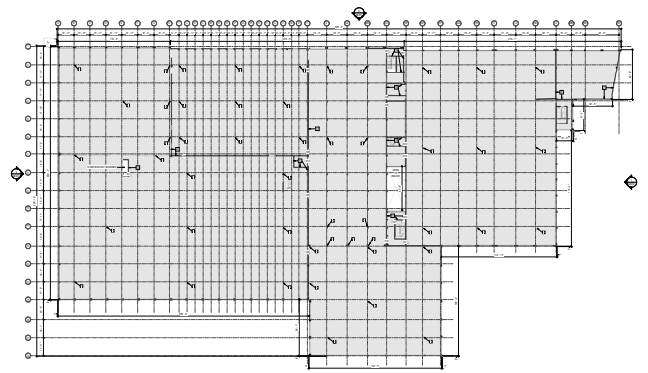
EXTERIOR



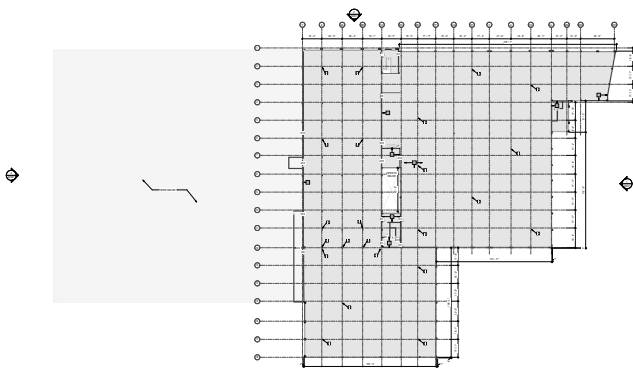
FIRST FLOOR



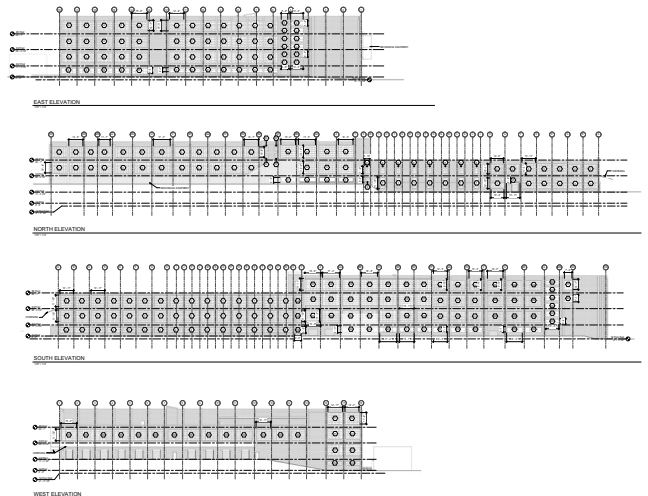
SECOND FLOOR



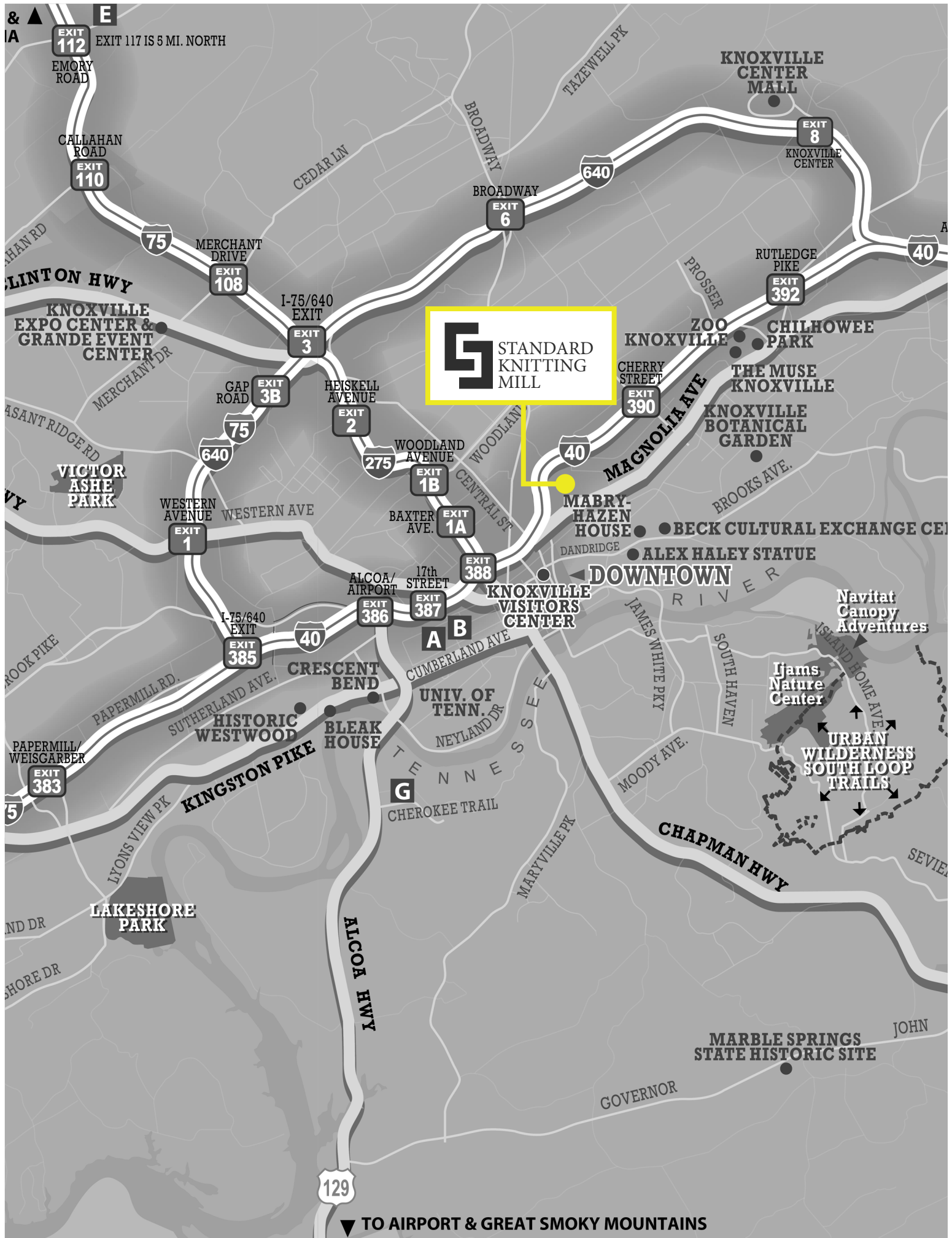
THIRD FLOOR



FOURTH FLOOR



ELEVATIONS



S STANDARD
KNITTING
MILL

▼ TO AIRPORT & GREAT SMOKY MOUNTAINS

COMPONENTS



MULTI-FAMILY



RETAIL



ENTERTAINMENT



OFFICE



CONCEPTUAL

PRELIMINARY & SUBJECT TO CHANGE



WEST VIEW



SOUTH VIEW

LEASING

Grace Moring

Leasing

Tel: 843.518.6808

Email:

gmoring@wrsrealty.com



410 Mill Street, Bldg. 1, Suite 200
Mount Pleasant, SC 29464
843.654.7888 Office
843.654.7889 Fax
www.wrsrealestate.com